

2009 Block of the Month

Harmony Village

BLOCK 11 - Checker Board and The Tall House - page 1

2nd last month. We are making the tall house and the checker board this month

REQUIREMENTS

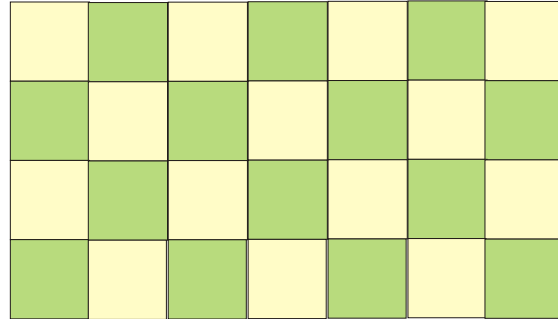
Checker Board

From Beige print fabric cut:

2 - 1½" x 11" strips

From Green fabric cut:

2 - 1½" x 11" strips



Tall House

From Beige print fabric cut:

2 - 3½" squares

From Roof fabric cut:

1 - 6½" x 3½" rectangle

From Window fabric cut:

2 - 1½" x 2½" rectangles

From Door fabric cut:

1 - 2½" x 3½" rectangle

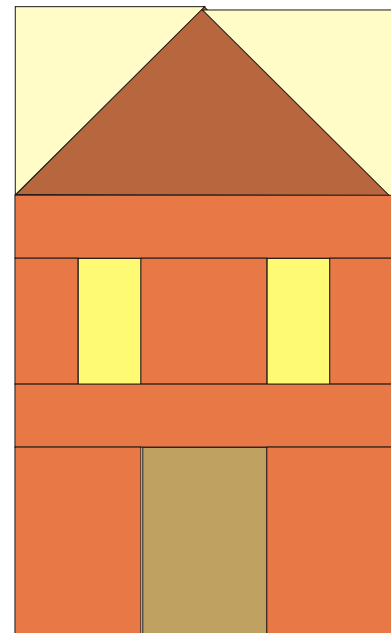
From Wall fabric cut:

2 - 6½" x 1½" rectangles

2 - 1½" x 2½" rectangles

1 - 2½" squares

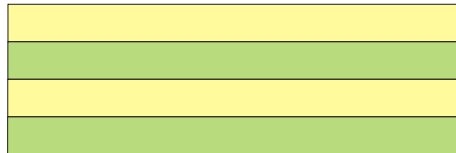
2 - 2½" x 3½" rectangles



PIECING CHECKER BOARD

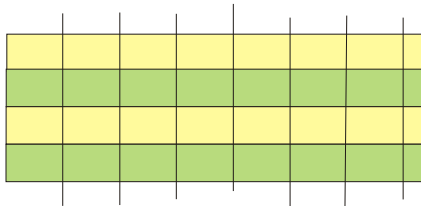
Sew the 4 strips together to form 4 stripes.

Press seams towards the green fabric.



Cut the strip into 7 - 1½" x 4½" strips across the stripes.

There will be about half an inch for straightening the outer edge.



Harmony
QUILTS
LANCEFIELD

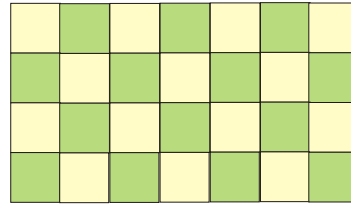
This Block of the Month pattern has been produced by Harmony Quilts, Victoria, Australia. For more information and terms of use please go to www.harmonyquilts.com.au

2009 Block of the Month

Harmony Village

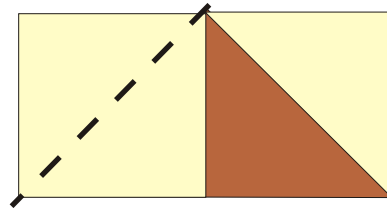
BLOCK 11 - Checker Board and The Tall House - page 2

Turn every second strip around and sew the strips back together to form the Checker Board block.

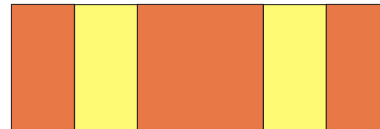


PIECING THE TALL HOUSE

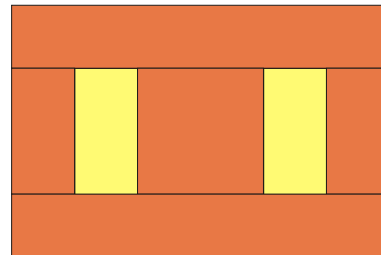
Position a 3 1/2" beige square on the 3 1/2" x 6 1/2" rectangle and stitch diagonally from corner to corner on the beige square. Trim the seam allowance to 1/4" and press towards the dark side. Repeat for the opposite corner of the rectangle.



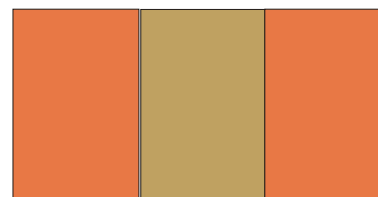
Sew a Window 2 1/2" x 1 1/2" rectangle to each side of the Wall 2 1/2" square. Sew a Wall 2 1/2" x 1 1/2" rectangle to each side of this unit. Press seams towards the dark fabric.



Sew a Wall 6 1/2" x 1 1/2" rectangle to the top and bottom of this unit. Press seams away from the window unit.



Sew a Wall 2 1/2" x 3 1/2" rectangle to each side of the Door 2 1/2" x 3 1/2" rectangle. Press seams towards the dark fabric.



Sew the Roof unit to the top of the Window unit and the door unit to the bottom of the Window unit. Press.

Congratulations you have finished block 11.

Harmony
QUILTS
LANCEFIELD

This Block of the Month pattern has been produced by Harmony Quilts, Victoria, Australia. For more information and terms of use please go to www.harmonyquilts.com.au